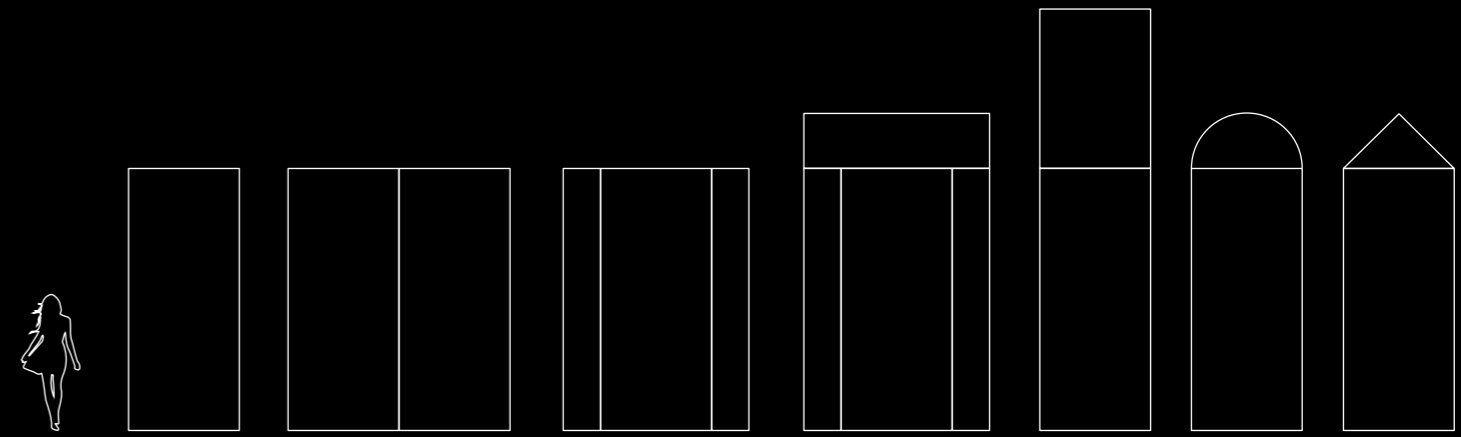




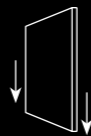
Doors to endless possibilites





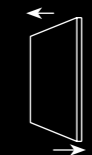
### Up to 2 x 5 m

Maximum door leaf dimensions 2 x 5 m. Each construction may be additionally extended by fixed elements or by glazing.



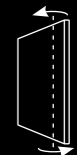
### Up to 500 kg

This impressive maximum door leaf weight enables us to experiment with a variety of finishes, disregarding their weight.



### Two-sided

Possibility of upgrading the door leaf for inwards and outwards opening.



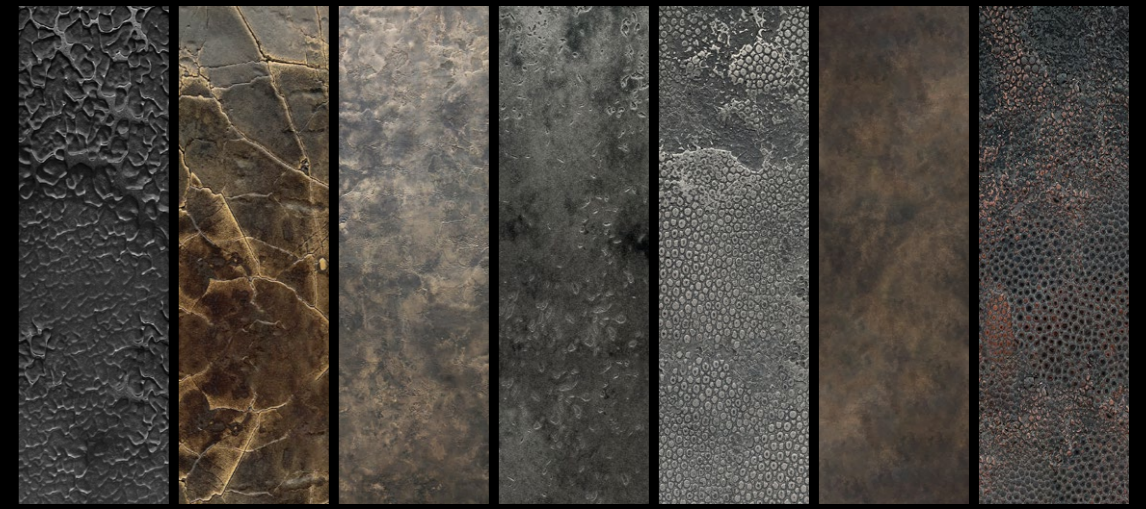
### Technology

State-of-the-art technology and innovative fixing system ensure top quality of performance and use, as well as smooth door opening, disregarding the weight of the door leaf.

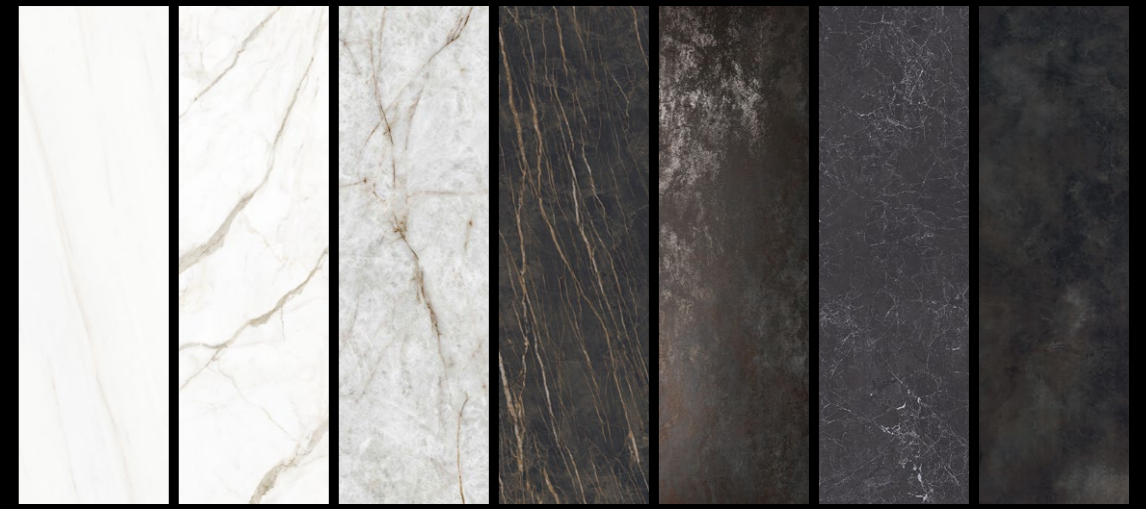




LUXURIOUS LIQUID METAL FINISHES



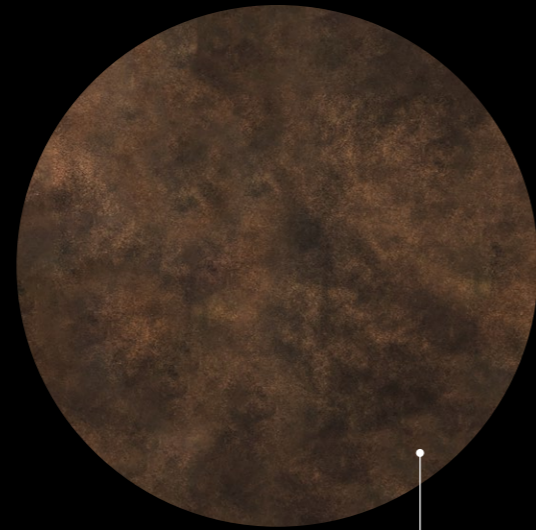
LUXURIOUS CERAMIC FINISHES



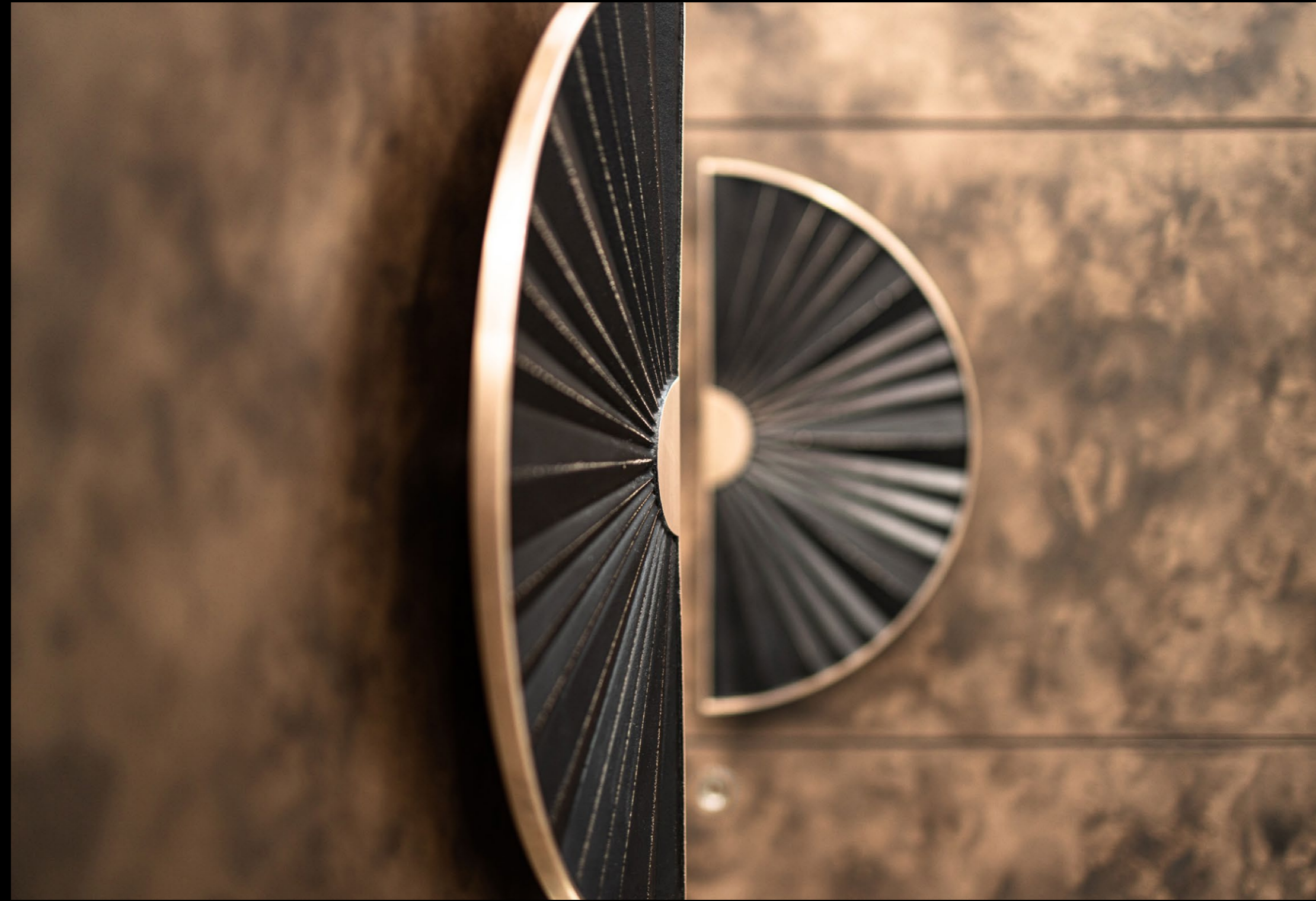
LUXURIOUS WOODEN EFFECT FINISHES







**Antique Bronze Smooth**  
Liquid metal







**Transparent Glass**  
ESG glass





Ceres

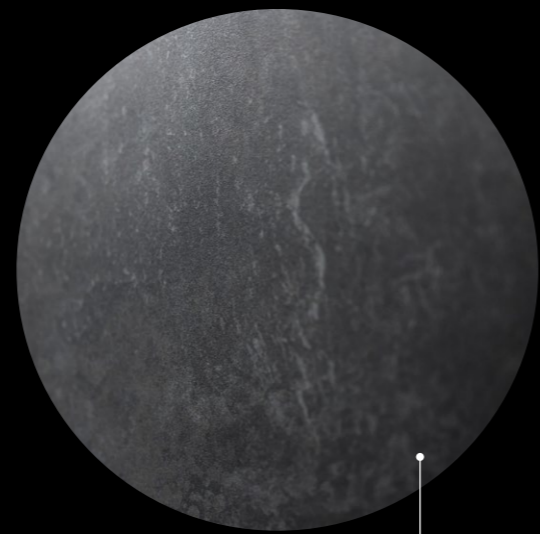


**Patagonia**  
Natural stone





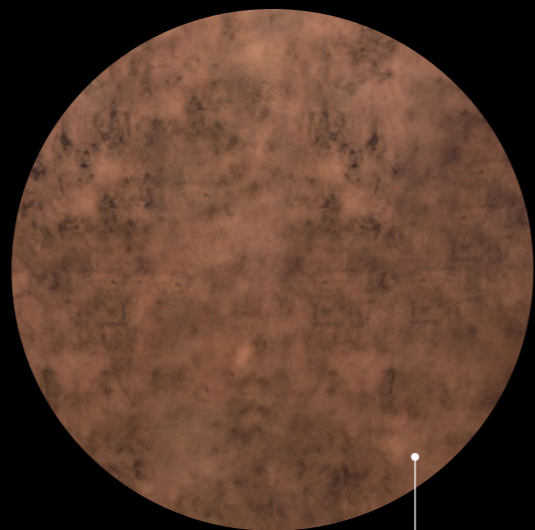
Mono



**Ossido Nero**  
Ceramic



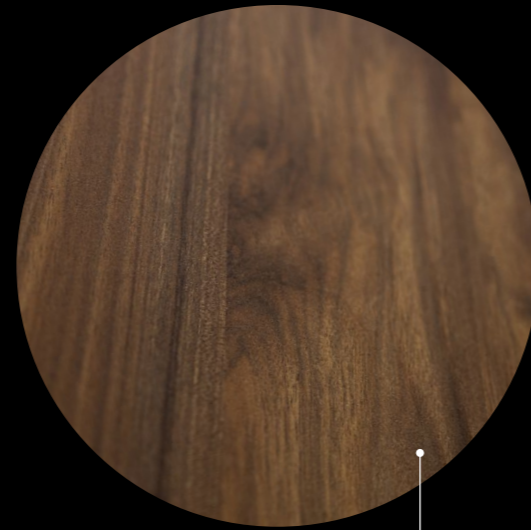
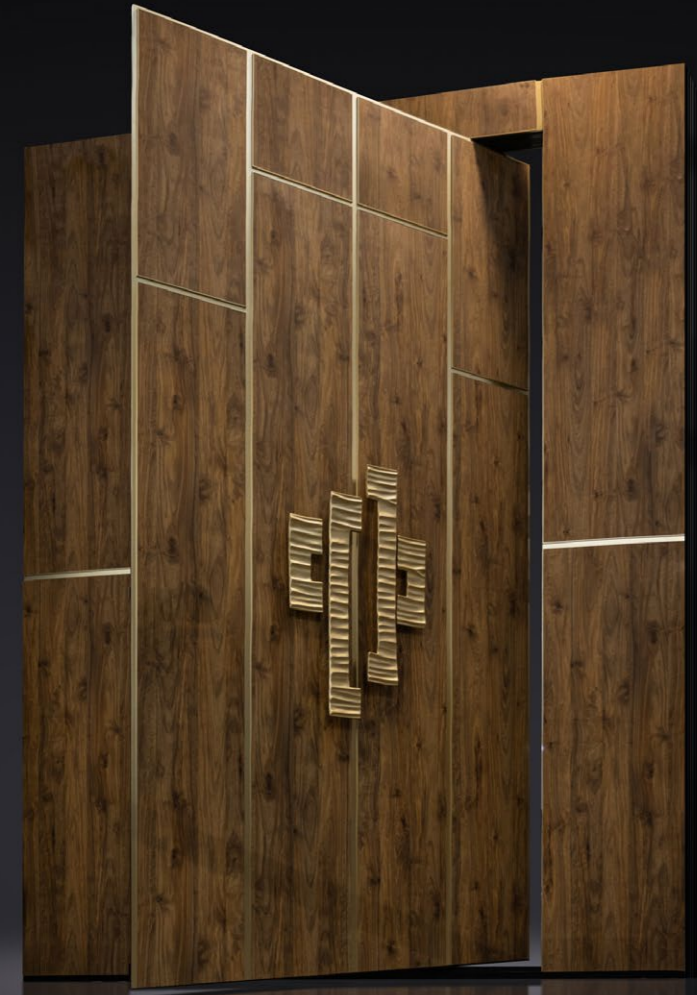




**Antique Copper Smooth**  
Liquid metal







**Noyer Appalaches**  
HPL





Troya

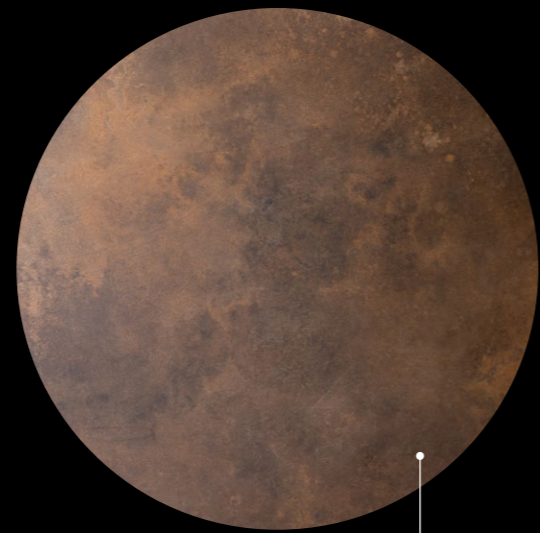


**Troya**  
Powder coating





Struttura

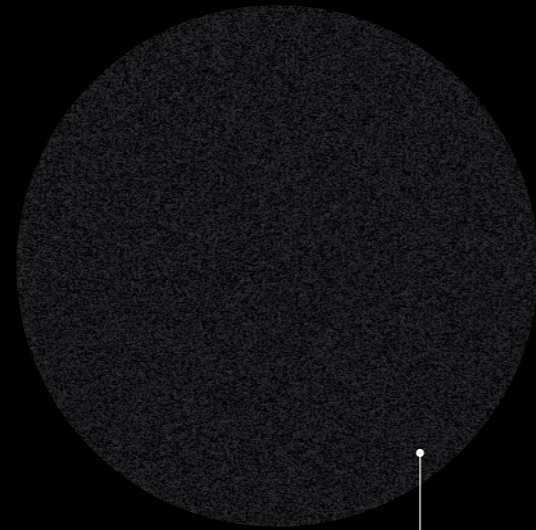


**Ossido Bruno**  
Ceramic





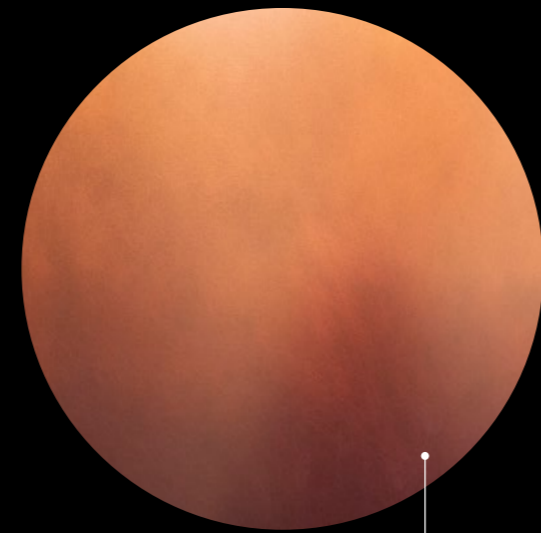
Troya



**RAL 9005 MS**  
Powder coating







**Tramonto M5**  
Copper sheet





Noce



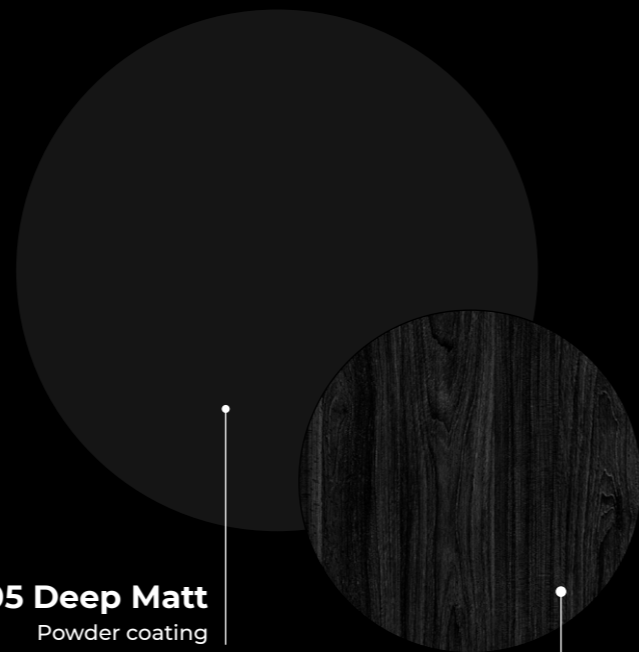
**American Walnut**  
Wooden veneer







**RAL 9005 Deep Matt**  
Powder coating



**Black Wood**  
Wood effect heat-transfer film







**Black Wood**  
Wood effect heat-transfer film



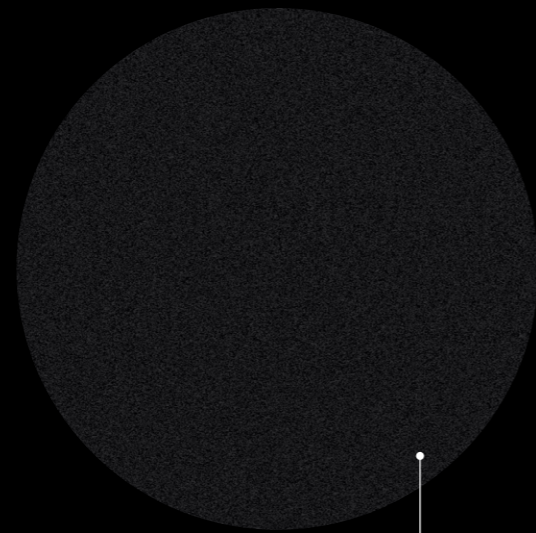




**Black Glass**  
ESG glass



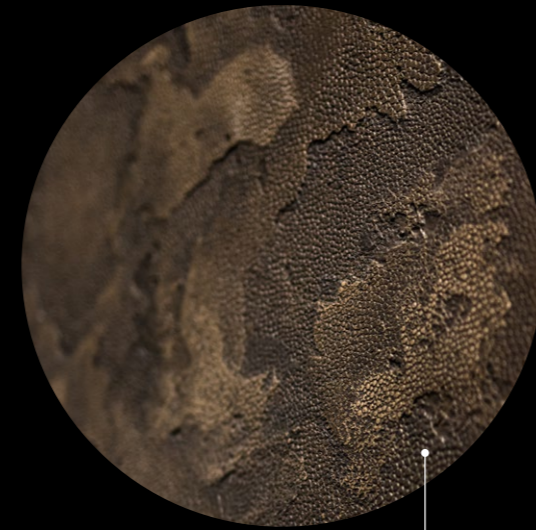
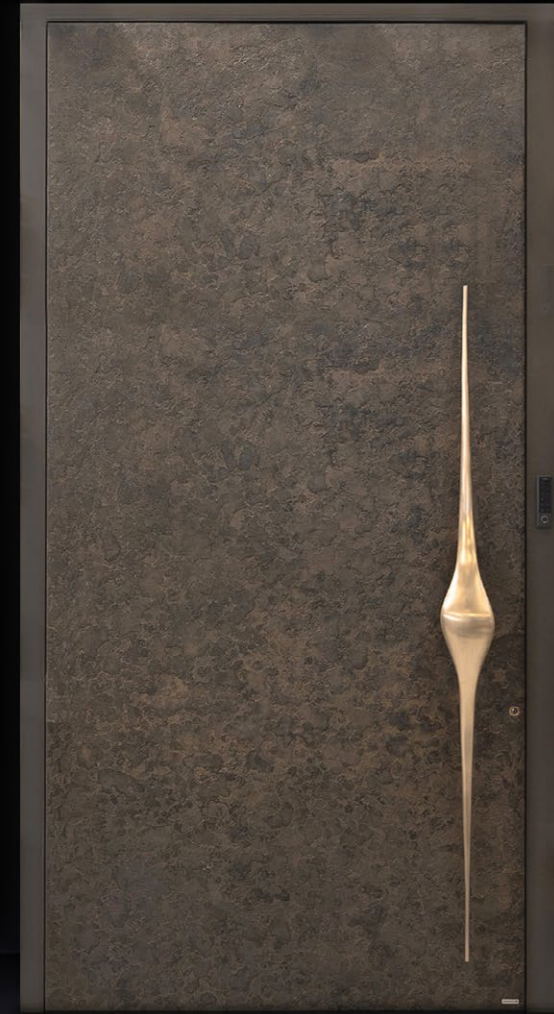




**RAL 9011 MS**  
Powder Coating



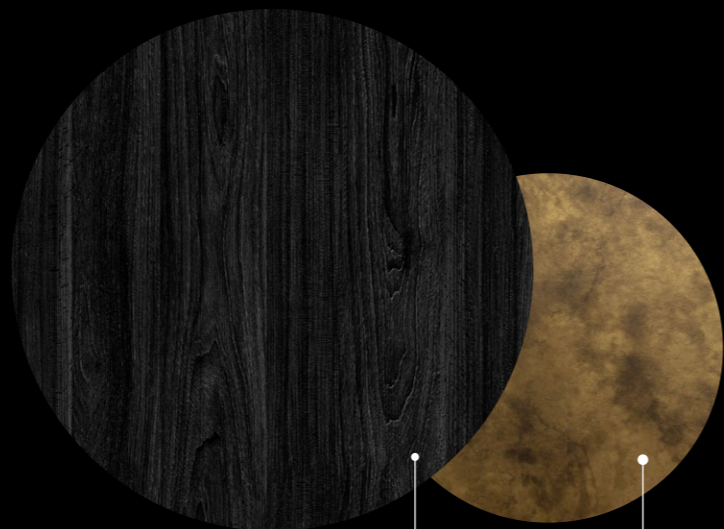




**Antique Textured Bronze**  
Liquid metal







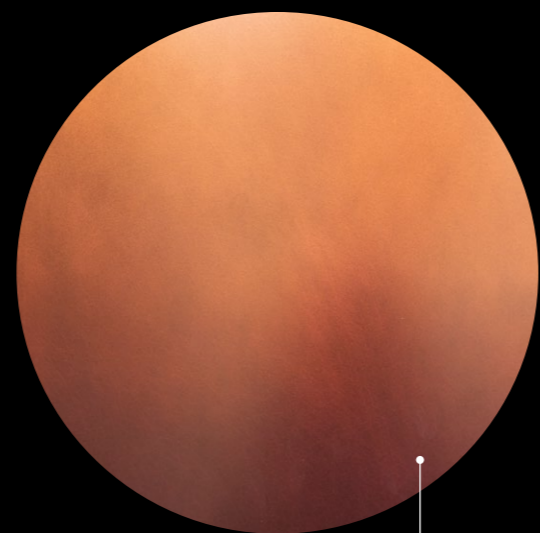
**Black Wood**  
Wood effect heat-transfer film

**Aged brass**  
Liquid metal





Lavaine



**Tramonto M5**  
Copper sheet

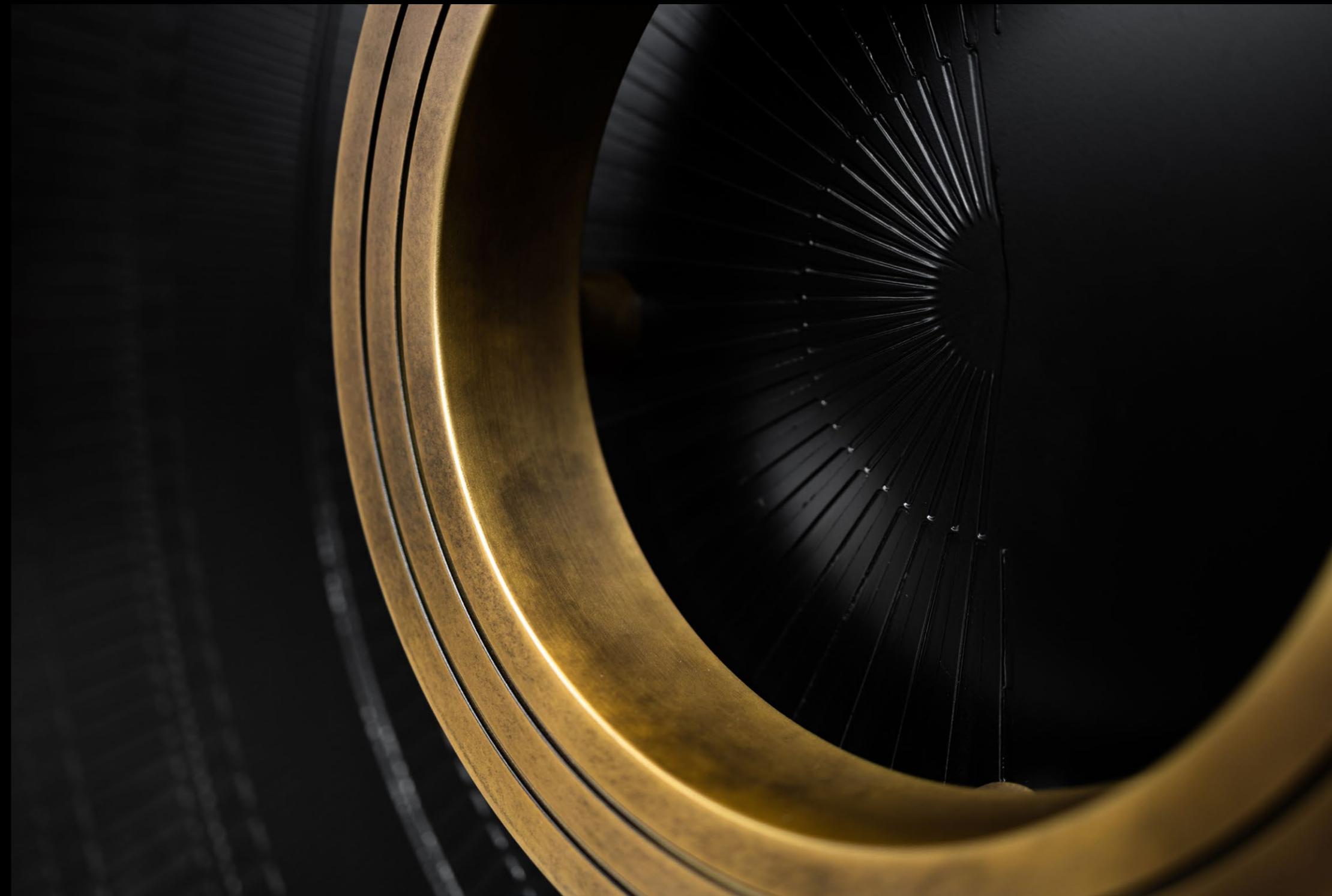




Rivoluzione

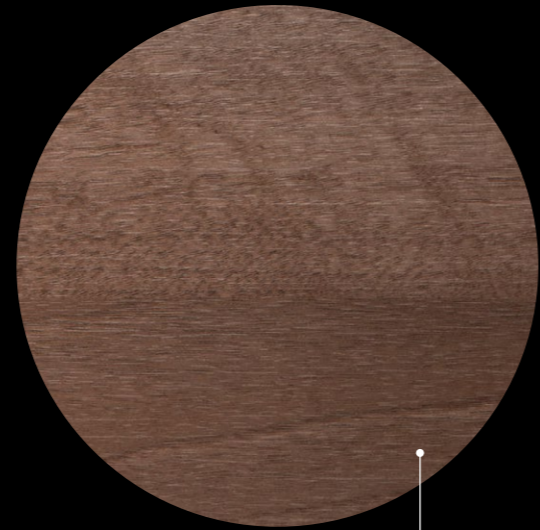


**RAL 9005 M**  
Powder Coating





Sienna Noce



**Sienna Noce**  
Wood effect heat-transfer film

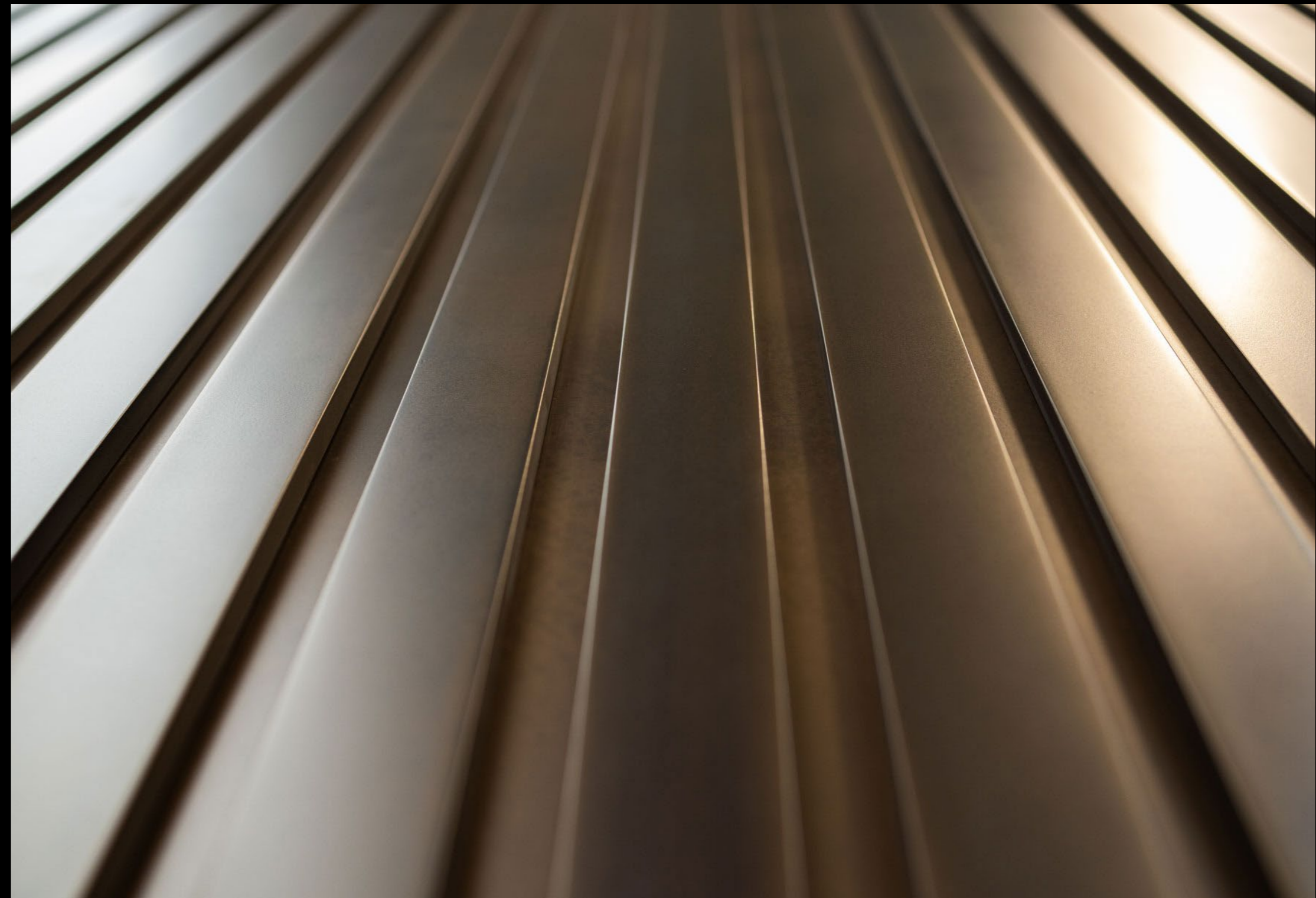




Camelot



**Camelot**  
Liquid metal







[www.pivotdoors.de/en](http://www.pivotdoors.de/en)

The manufacturer reserve the right to introduce changes to product design and dimensions, as well as minor technological modification aimed at improvement of the door quality or functionality, without notice to the customer. Photos, dimensions and colours presented in the catalogue may differ insignificantly from the actual ones due to differences between printed version an the actual situation. The use of original colour chip charts rather than of the catalogue printout is recommended for selection of the colour or the sheathing material.

All the contents and graphics of this publication constitute property of RK Aluminium Robert Karasek, and may not be copied or duplicated unless upon the owner's consent.





RK Exclusive Doors

---

31 ks. Józefa Londzina Street,  
43-382 Bielsko-Biała, Poland

phone: +48 33 497 00 78  
e-mail: [office@rkaluminium.pl](mailto:office@rkaluminium.pl)